

Simplifying supply chains

Dr. Jeff Torrance

Senior Vice President and General Manager
Industrial & Embedded IoT

Qualcomm Technologies, Inc.

The IoT landscape is fragmented

Core components exist in silos and are not integrated

This results in:

- Device design complexity
- High development costs and significant firmware development needs
- Long lead times to deliver devices to market
- Higher costs as services are added piecemeal on top of BOM costs
- Sub-optimal integration of components in commercial solutions



Qualcomm Aware™ Platform simplifies digital transformation

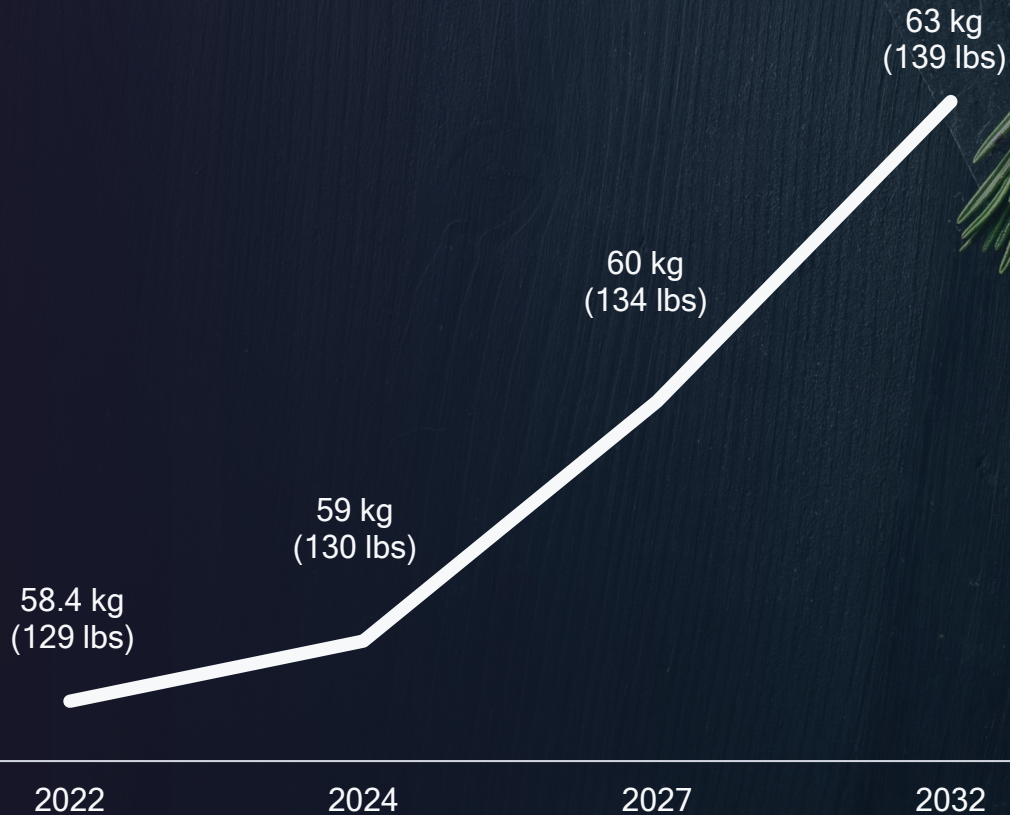
Optimizes the integration and deployment of a vast foundational technology library to deliver:

- A simple, security-focused, and scalable way for developers, enterprises, and system integrators to develop and deploy tailored digital transformation solutions
- Cloud APIs and webhooks to integrate Qualcomm Aware to existing ERPs, private clouds, and portals
- Real-time location and condition data to deliver operational visibility and cloud control over goods, assets, and fleets
- A security-focused device-to-cloud architecture that allows enterprises to deploy a ready-to-use solution, with OTA feature updates, device provisioning, and more
- Positioning capabilities using Wi-Fi, cellular, and NTN networks for location in even the most challenging signal environments



Demand for premium quality meat in South Korea is on the rise

Average consumption per person per year

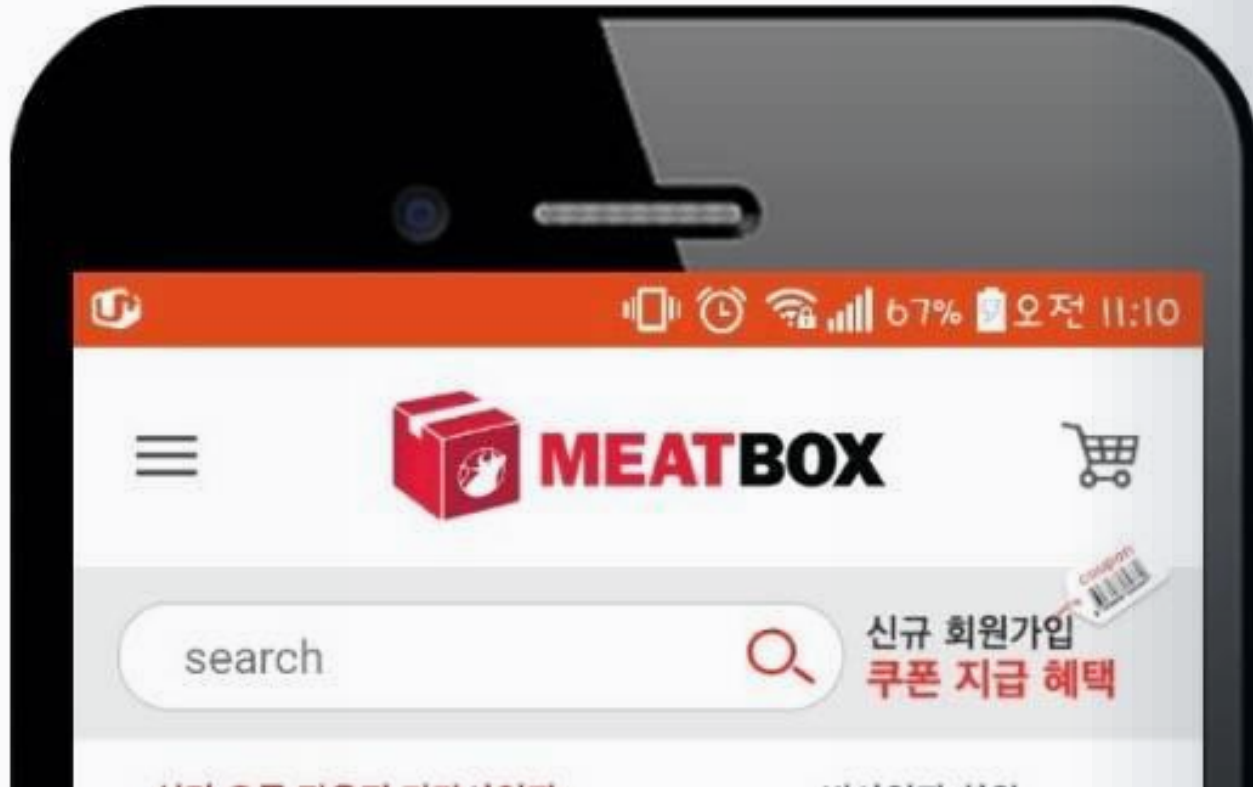




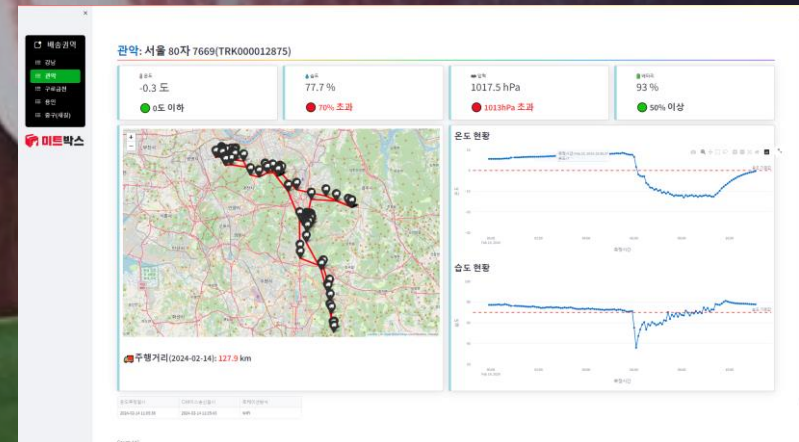
대한민국 No.1 축산물쇼핑몰 **MEATBOX**

Cold chain logistics challenges & needs:

- Temperature
- Humidity
- Time
- Location



Meatbox tracking dashboard



“The use of Qualcomm Aware Platform has led to significant improvements in customer service quality and order volume.”

- Timely delivery
- Maintaining proper ripening time
- Minimizing spoilage rates
- Identifying causes of customer claims



Qualcomm



Shipping container tracking & monitoring

Integrated connectivity & positioning

Tampering detection

Preventative maintenance

Pallet tracking

Pressure sensing

Dashboard visibility

Package tracking

Tilt detection

Fleet tracking & monitoring

ERP pre-integrations

Flight mode detection

Remote device management

Loading dock visibility

Humidity detection

Impact detection

Cold chain management

Developer tools & APIs

Light sensing

Item tracking

Route optimization

Thank you

Qualcomm

Follow us on: [f](#) [t](#) [in](#) [@](#) [v](#)

For more information, visit us at:

qualcomm.com & qualcomm.com/blog

Nothing in these materials is an offer to sell any of the components or devices referenced herein.

©2018-2022 Qualcomm Technologies, Inc. and/or its affiliated companies. All Rights Reserved.

Qualcomm is a trademark or registered trademark of Qualcomm Incorporated. Other products and brand names may be trademarks or registered trademarks of their respective owners.

References in this presentation to “Qualcomm” may mean Qualcomm Incorporated, Qualcomm Technologies, Inc., and/or other subsidiaries or business units within the Qualcomm corporate structure, as applicable. Qualcomm Incorporated includes our licensing business, QTL, and the vast majority of our patent portfolio. Qualcomm Technologies, Inc., a subsidiary of Qualcomm Incorporated, operates, along with its subsidiaries, substantially all of our engineering, research and development functions, and substantially all of our products and services businesses, including our QCT semiconductor business.